

# EQUIPMENT FOR OVERHEAD CONDUCTORS STRINGING

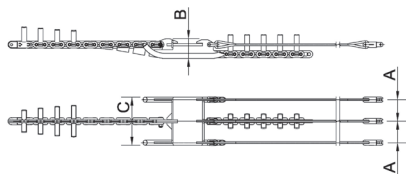
CO...

## FIX TYPE HEADBOARD FOR TWIN OR TRIPLE BUNDLED CONDUCTORS

Suitable to connect 2 or 3 conductors per phase to the pulling rope.

Recommended when operating with tensioner machines with two or more independent hydraulic circuits.

Complete with swivel joints and steel rope.



MODEL	Conductors N°	Dimensions (mm)			N° swivel joints		Rope length Ø16 mm*	For pulleys Mod.	Working load kN	Weight kg
		A	B	C	250/BCR	250/DR				
CO B1 F	2	146	146	326	2	1	2X3,5 m	025/5/5 - 025/5/5SC - 025/5/5E 025/3/1 - 025/3/1SC - 025/3/1E 025/4/3 - 025/4/3SC - 025/4/3E	93	90
CO T1 F	3	146	146	326	3	1	3x 3,5 m		93	100
CO B2 F	2	180	166	403	2	1	2 x3,5 m	025/3/1L - 025/3/1LSC - 025/3/1LE 025/4/3L - 025/4/3LSC - 025/4/3LE 025/6/3L - 025/6/3LSC	93	105
CO T2 F	3	180	166	403	3	1	3x 3,5 m		93	110
CO B3 F	2	222	170	487	2	1	2 x3,5 m	025/7/1L - 025/7/3L	93	120
CO T3 F	3	222	170	487	3	1	3x 3,5 m		93	135

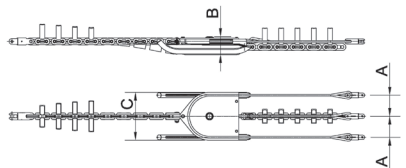
\* Ø18mm steel rope available upon request

## BALANCING HEADBOARD FOR TWIN OR TRIPLE BUNDLED CONDUCTORS

Suitable to connect 2 or 3 conductors per phase to the pulling rope.

Recommended when operating with single hydraulic circuit tensioner machines.

Complete with swivel joints and steel rope.



MODEL	Conductors N°	Dimensions (mm)			N° swivel joints		Rope length Ø16 mm*	For pulleys Mod.	Working load kN	Weight kg
		A	B	C	250/BCR	250/DR				
CO B1	2	145	139	340	2	1	1x30m	025/5/ - 025/5/5SC - 025/5/5E 025/3/1 - 025/3/1SC - 025/3/1E 025/4/3 - 025/4/3SC - 025/4/3E	100	120
CO T1	3	145	139	340	3	1	1x30m ÷ 1x15m		100	140
CO B2	2	180	154	410	2	1	1x30m	025/3/1L - 025/3/1LSC 025/3/1LE - 025/4/3L 025/4/3LSC - 025/4/3LE 025/6/3L - 025/6/3LSC	100	145
CO T2	3	180	154	410	3	1	1x30m ÷ 1x15m		100	160
CO B3	2	222	160	494	2	1	1x30m	025/7/1L - 025/7/3L	100	175
CO T3	3	222	160	494	3	1	1x30m ÷ 1x15m		100	195

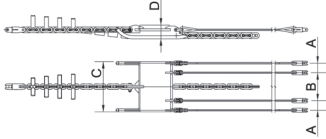
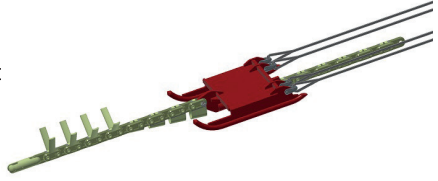
\* Ø18mm steel rope available upon request



CO...

## FIX TYPE HEADBOARD FOR QUAD BUNDLED CONDUCTORS

Suitable to connect 4 conductors per phase to the pulling rope.  
Recommended when operating with tensioner machines with two or more in.  
Complete with swivel joints and steel rope.

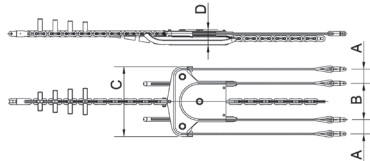


MODEL	Conductors	Dimensions (mm)				N° swivel joints		Rope length	For pulleys	Working load	Weight
		N°	A	B	C	D	250/BCR				
CO Q1 F	4	100	292	526	146	4	1	4X3,5 m	025/5/6 - 025/3/2 - 025/4/4	93	120
CO Q2 F	4	145	350	643	170	4	1	4X3,5 m	025/3/2L - 025/4/4L - 025/6/4L	93	140
CO Q3 F	4	145	290	635	170	4	1	4X3,5 m	025/5/6SC - 025/3/2SC - 025/4/4SC	93	125
CO Q4 F	4	175	350	755	170	4	1	4X3,5 m	025/3/2LSC 025/4/4LSC 025/6/4LSC	93	145
CO Q5 F	4	185	444	869	185	4	1	4X3,5 m	025/7/4L	93	165

\* Ø18mm steel rope available upon request

## BALANCING HEADBOARD FOR QUAD BUNDLED CONDUCTORS

Suitable to connect 4 conductors per phase to the pulling rope.  
Recommended when operating with single hydraulic circuit tensioner machines.  
Complete with swivel joints and steel rope.



MODEL	Conductors	Dimensions (mm)				N° swivel joints		Rope length	For pulleys	Working load	Weight
		N°	A	B	C	D	250/BCR				
CO Q1	4	100	290	540	139	4	1	2X30 m	025/5/6 - 025/3/2 - 025/4/4	100	170
CO Q2	4	140	360	690	154	4	1	2X30 m	025/3/2L - 025/4/4L - 025/6/4L	100	190
CO Q3	4	145	290	630	139	4	1	2X30 m	025/5/6SC - 025/3/2SC - 025/4/4SC	100	175
CO Q4	4	175	350	750	154	4	1	2X30 m	025/3/2LSC - 025/4/4LSC 025/6/4LSC	100	195
CO Q5	4	185	444	864	160	4	1	2X30 m	025/7/4L	100	215

\* Ø18mm steel rope available upon request

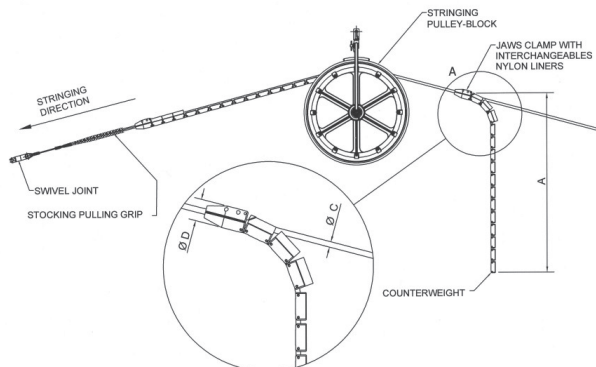
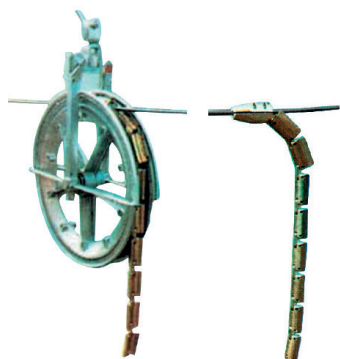
# EQUIPMENT FOR OVERHEAD CONDUCTORS STRINGING

## CO 60/...

### NON-ROTATING COUNTERWEIGHT DEVICE FOR OPGW CABLES STRINGING OPERATIONS

Upon placing the purchase order, please specify exact overall conductor diameter.

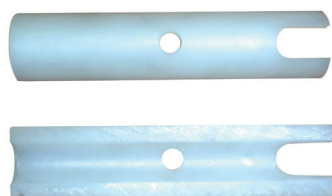
**NOTE:** one set consists of two counterweight devices.



MODEL	Dimensions counterweight (mm)		Weight kg	Ø Conductor "C" mm	Quantity per set
	"D"	"A" approx.			
CO 60/9	60	990	8	10 ÷ 17	2
CO 60/12	60	1330	10.5	17 ÷ 23	2
CO 80/12	80	1800	24	17 ÷ 27	2

#### Upon order please specify:

- Groove width of the aerial roller;
- Overall OPGW diameter, "C" dimension.



Interchangeable nylon liners

**Mod. CO60GN...**

**NOTE:** for optimal performances the two devices must be used in pairs.

**NOTE:** Upon order, please specify the exact overall conductor diameter.