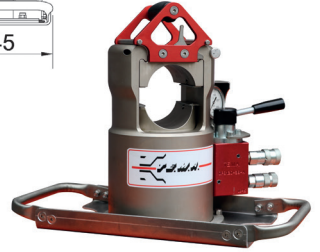
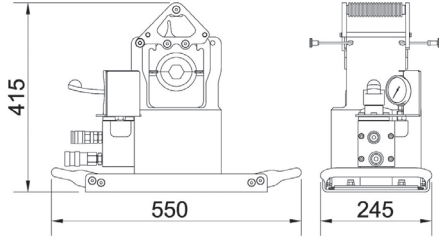




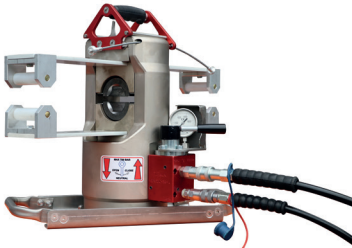
## P 8120

### HYDRAULIC PRESS (120 ton)

Hydraulic press 120 ton capacity, suitable for compression of conductor midspan and dead-end joints.  
 Max. compression force: 120 Tons at 700 bar.  
 Quick connectors.  
 360° rotating head.  
 Press weight: 55 kg  
 Compression dies weight: 2,5 kg  
 Max. hexagonal key: 65 mm  
 Press dimensions: 520x242x415 mm  
 Steel case weight: 26 kg  
 Steel case dimensions: 470x770x675 mm



#### Version on request:

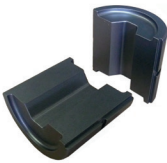


Press unit equipped with anti-deformation support suitable for midspan joint

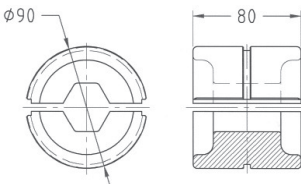
#### Optional:



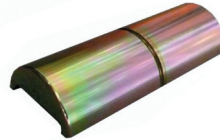
Hanging eye to allow the press machine to be securely used in suspension mode



Dies **Mod. S 8120**



Hexagonal key circular dies, suitable for aluminum and steel joints.  
 Hexagonal key to be specified upon order confirmation.



Joint straightener **Mod. RD 8120**

Tools and dies			
Press	Joints to be compressed made of:	For hexagonal com-pression	Tool for joints straightening
P 8120	Steel	S 8120B/...	RD 8120
	Aluminum	S 8120A/...	

# EQUIPMENT FOR OVERHEAD CONDUCTORS STRINGING

## CM 8002

### MOTORIZED HYDRAULIC POWER UNIT

Petrol engine driven hydraulic pump.  
Complete with quick-connection type power take-off and protector frame.  
Suitable for use with press model P 8120.

#### Technical features:

Four stroke petrol engine of 4,3 HP  
Flow: 1.8 l/min  
Max. oil pressure: 700 bar  
Oil tank capacity: 10 litres  
Weight: 49 kg  
Dimension: 380x500x620 mm  
Steel case weight: 26 Kg  
Steel case dimensions: 470x770x675 mm



## PB 8000

### HYDRAULIC HAND PUMP

Two stages hand pump with pressure relief valve, and quick connectors.  
Suitable for connection to presses P 8120 and hydraulic punching machine 754H.

#### Technical features:

Max. oil pressure: 700 bar  
Oil delivery volume per pumping: 1st stage 40 cm<sup>3</sup>- 2nd stage: 2.6 cm<sup>3</sup>  
Oil tank capacity: 2,2 litres  
Weight: 8,5 kg  
Case dimensions: 80x27x23 cm

**NOTE:** for the hydraulic punching machine **Mod. 754H** is supplied the single hose version.



## T 8120...

### HYDRAULIC HOSES SET

Low and high pressure with quick connectors.

MODEL	Length (m)
T8120.003	3
T8120.006	6
T8120.010	10
T8120.015	15
T8120.030	30



## KTC 8120...

### QUICK CONNECTION TYPE JOINTS

Suitable for joining hoses of different lengths together.





## PG...

### JOINT PROTECTOR

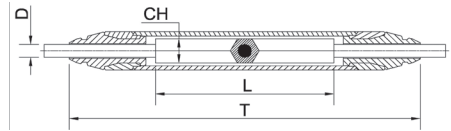
Suitable for protecting the mid-span joint while passing on pulley-blocks during conductor stringing operations.

Upon placing the purchase order, please specify:

L = joint length after compression

D = conductor diameter

CH = hexagonal key (joint section dimension after compression)



**RUBBER ENDS** (interchangeable)

Mod. PG 60/R....

Mod. PG 80/R....

Mod. PG 90/R....

Upon placing the purchase order, please specify conductor overall diameter.



MODEL	Pulley's groove width	Max hexagonal key	Breaking load
	mm	mm	kN
PG 60	68	40	20
PG 80	95	56	20
PG 90	95	65	20

## 654/...

### RATCHET TYPE CONDUCTOR CUTTER

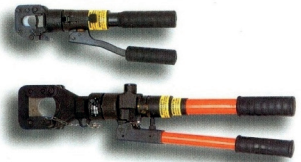
MODEL	Suitable for cutting of:	Max cutting capacity	Length	Weight	Spare blades
		mm	mm	kg	
654/1	ACSR, AAC, AAAC, copper cond.	31	740	5	654/3
654/2	Steel wire	11	711	4	654/4



## 655/...

### HAND OPERATED HYDRAULIC CONDUCTOR CUTTER

MODEL	Max cutting capacity		Length	Weight	Spare blades
	Steel wire / earth wire	Bare conductor (*)	mm	kg	
655/1	13	24	370	2,7	655/1L
655/2A	18	45	550	7	655/2L



**NOTE:** (\*) ACSR-AAC-AAAC and copper;

- Supplied with case.

## TR01

### ACSR CABLE TRIMMER

For a fast and accurate cable trimming.

Standard set composed of: 1 cutter, 1 bush-support, 3 bushes and 1 plastic transport case.

**NOTE:** Upon placing the purchase order, please specify conductor overall diameter.

