

ALUMINUM ALLOY EQUIPMENT FOR OVERHEAD LINES

036

LINE CART / INSPECTION TROLLEY FOR BUNDLED CONDUCTORS

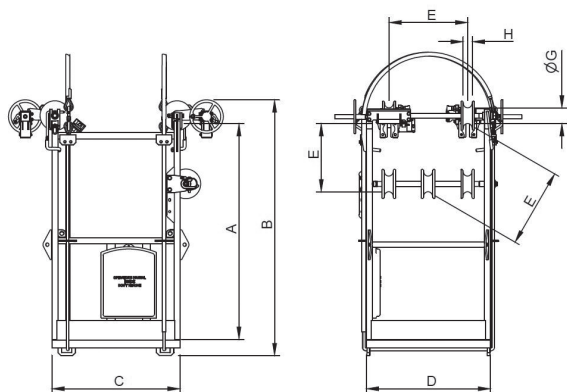
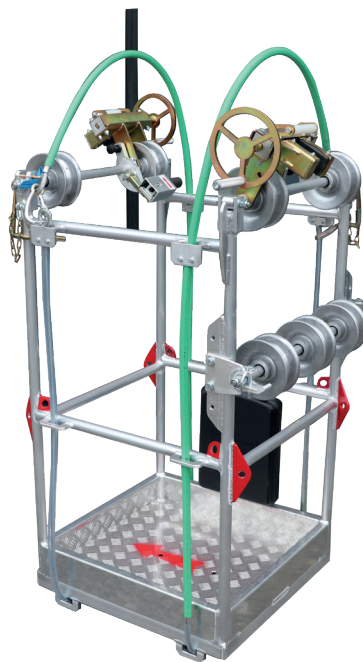
Suitable for 2, 3 or 4 bundled conductor configurations.

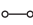

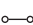
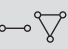
1 lineman towable trolley, with two cross-arms and a positioning bar complete with aluminum wheels on ball-bearings, anti-slip floor, n°2 stationary brakes, safety frame ropes and counter-meter device.

Made of welded aluminum alloy (certified TIG system).

Upon request:

- Nylon wheels;
- Earthing device;
- "Custom-made" size available;
- Anchoring point in compliance with UNI EN 795:2012.



MODEL	N° linemen	A	B	C	D	E	G	H	Weight	Working load	For bundle
		mm	mm	mm	mm	mm	mm	mm	kg	daN	
036-A	1	1095	1300	650	630	400 457	80	46	43	100	
036-B	1	1095	1300	650	630	400 457	80	46	49	100	
036-C	1	1095	1300	650	815	400 457 500 600	80	46	50	100	
036-D	1	1095	1300	650	815	400 457 500 600	80	46	53	100	



036/M

MOTORIZED LINE CARTS / INSPECTION TROLLEYS FOR BUNDLED CONDUCTORS

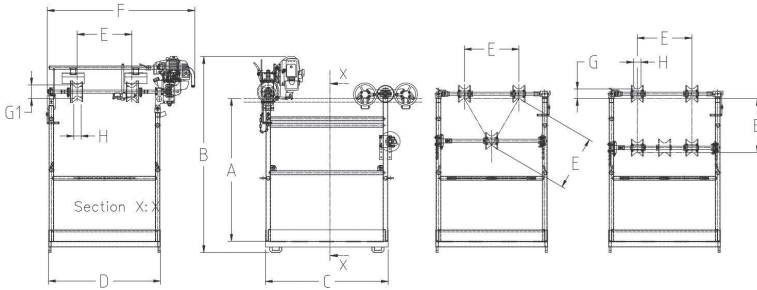
Available for 2, 3 or 4 bundled conductor configurations.
 Single lineman's cart with mechanical motorized-driven traction system.
 Made of tubular aluminum alloy welded structure (certified TIG system)

Features and performances:

- 2 stroke 50cc gasoline engine 2.4 HP (1.8 kW);
- Max speed 20 m/min (both directions);
- Max slope 25% (15°);
- Mechanical transmission, reversing drive direction with idle position;
- Transmission axle with rubber wheels for high adherence;
- Supporting and positioning cross-arms with aluminum wheels on ball-bearings;
- N° 2 stationary brakes, safety frame ropes and counter meter device.

Upon request:

- Nylon wheels;
- Earthing device;
- "Custom-made" size available;
- Anchoring point in compliance with UNI EN 795:2012.



MODEL	N° linemen	A	B	C	D	E	F	G	G1	H	Weight kg	Working load daN	For bundle
		mm	mm	mm	mm	mm	mm	mm	mm	mm			
036/M-A	1	1042	1450	900	815	400 457 500	1080	70	100	55	75	100	
036/M-B	1	1042	1450	900	815	400 457 500	1080	70	100	55	82	100	
036/M-C	1	1042	1450	900	915	400 457 500 600	1180	70	100	55	82	100	
036/M-D	1	1042	1450	900	915	400 457 500 600	1180	70	100	55	87	100	